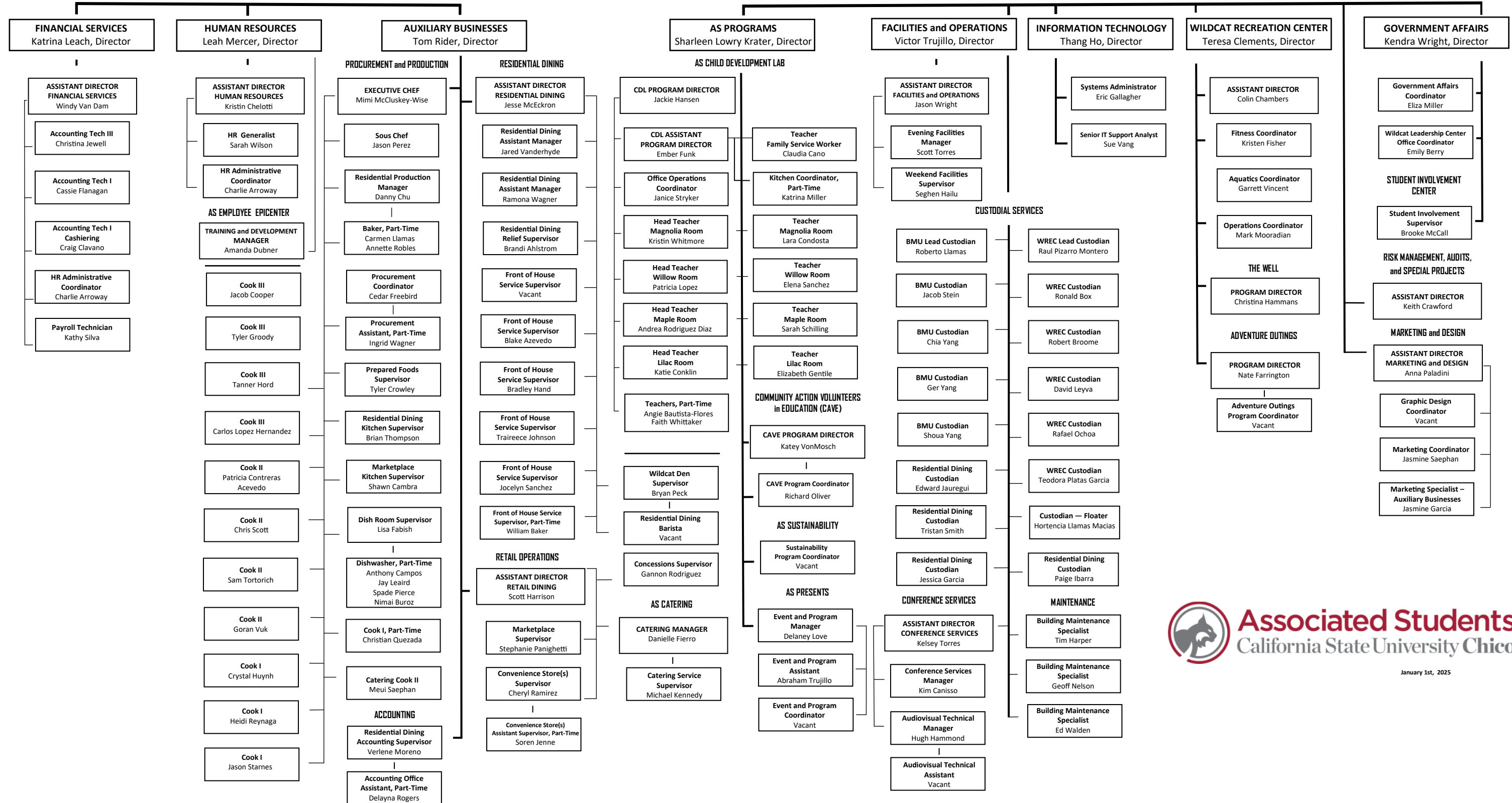


# EMPLOYEE ORGANIZATIONAL CHART

## AS Executive Director JAMIE CAMAREN CLYDE

Equity Leadership  
Coordinator, Part-Time  
Kristina Barger

ASSOCIATE EXECUTIVE DIRECTOR, Jon Simmons



January 1st, 2025

Pa

Spade Pierce